

FlowMatic® 09

NET WEIGHT - COMMERCIAL WEIGHING



09

Rate: 40 to 60 big bags/hr.
Weight capacity: 2 tons/big bag filler
Objectives: very high flow rate & single handle big bag

HIGH FLOW RATE FIBC FILLING UNIT WITH NET WEIGHING FOR SINGLE HANDLE BIG BAG

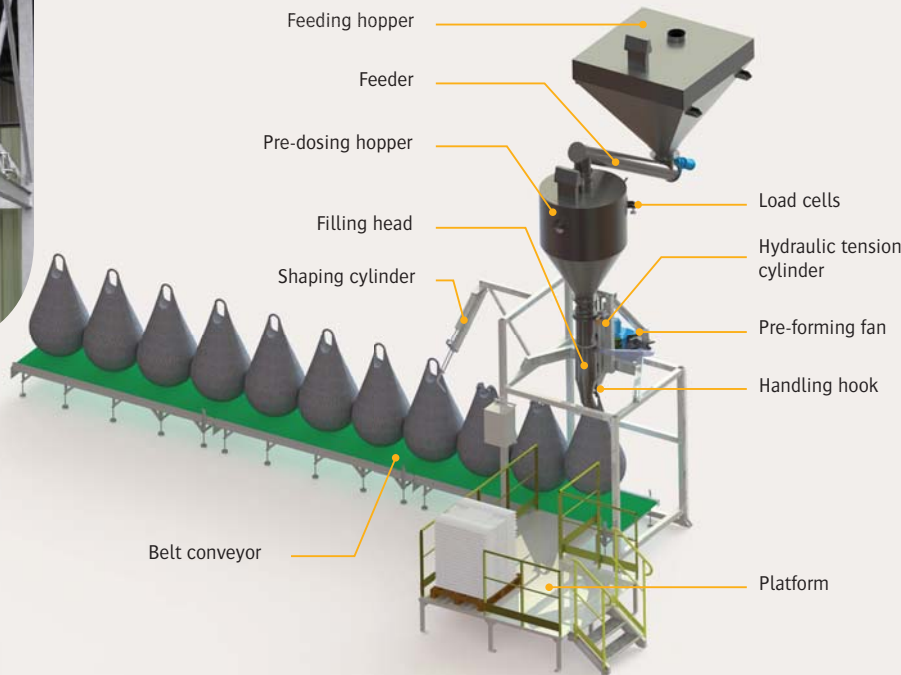
The FlowMatic® 09 model is intended for a continuous use with high flow rate by optimizing process time with hidden process tasks. The FlowMatic® 09 big bag filler is equipped with all the necessary options for packaging with minimal human intervention: pre-dosing weighing hopper, containment inflating seal, automatic cluster removal, height adjustable structure via a controlled pneumatic cylinder, big bag pre-forming fan, optional commercial weighing, vibrating table for densification, pallets unstacker, handling conveyor...

TECHNICAL SPECIFICATIONS

Flow rate: 40 to 60 big bags/hr.
Manufacturing materials: mild steel, SS 304L, SS 316L
Finishes: RAL 9006, micro-blasted, electropolishing
Installed power: 7.8 kW
Average power consumption: 1.4 kW
Compressed air consumption: 2.1 Nm³/hr.
Service pressure: 6 bars
Input 4 - 20 mA: 1
Input TOR: 14
Output TOR: 9
Weighing precision: ± 500 grams
Dust collecting rate: 600 m³/hr.
Maximum dimensions of big bags
Length x width x height: 1,300 x 1,300 x 2,400 mm



FlowMatic® 09



➤ Tension hook implanted on a hydraulic actuator



➤ Commercial weighing with net weight (time optimization)

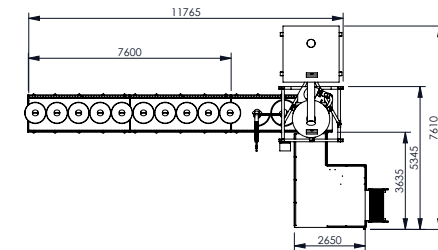
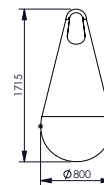
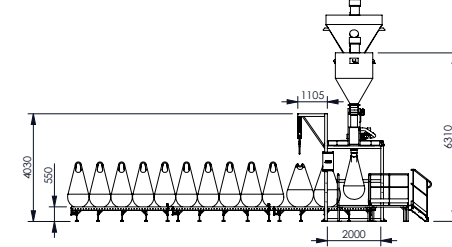
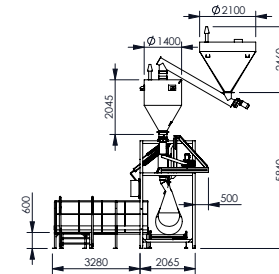


➤ Station with pre-dosing hopper (optional)



➤ Conveyor and automation

Advantages



Options



Vibrating table



Grounding clamp